



Buckmasters Circle, St. John's

REGIONAL OFFICES DELIVER THE FOLLOWING HOUSING PROGRAMS:

- RENTAL HOUSING PROGRAM
- PROVINCIAL HOME REPAIR PROGRAM
- COMMUNITY-BASED HOUSING PROGRAM

REGIONAL OFFICE OPERATIONS ALSO INCLUDE THE FOLLOWING SERVICES:

- TENANT RELATIONS
- MAINTENANCE
- MODERNIZATION AND IMPROVEMENT PLAN

HOUSING PROGRAMS

Rental Housing Program

The regional offices are responsible for approximately 5,500 social housing units. Low-income earners are the beneficiaries of the program with rental rates based on 25 percent of monthly household income.

Provincial Home Repair Program (PHRP)

PHRP provides financial assistance to low-income homeowners to enable them to conduct essential repairs/modifications in response to immediate housing needs (regular, emergency and disabled) of the household.

PHRP is delivered through the regional offices, Program Delivery is responsible for policy governing delivery, the budgeting process (regional allocations).

Community-Based Housing Program

Community-Based Housing groups assist low-to-moderate income households with a mix of rent-geared-to-income and low-end-of-market rental rates. In general, these projects are operated and owned by volunteer boards/community groups.



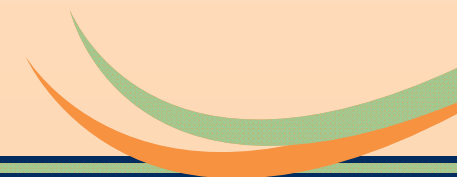
PHRP—Before and After

HOUSING SERVICES

Tenant Relations

Regional Offices have registered social workers who provide tenants with individual counseling on housing needs. They promote healthy communities by:

- Providing guidance and support for community development
- Performing assessments and referrals to community supports
- Meeting with housing community centers and tenant associations
- Organizing the annual tenant conference.



Maintenance

Housing's Maintenance Department provides day-to-day response to tenant requests for maintenance work.

Modernization and Improvement (M&I) Plan

M&I work includes planned retrofit of the building envelope (windows, doors, siding, etc.), as well as kitchens and bathrooms, etc.



Modernization and Improvement
Woodbine Avenue, Corner Brook

Director: Paul Abbott pbabbott@nlhc.nl.ca Avalon Regional Office 2 Canada Drive St. John's, NL A1C 5J2 Tel: (709) 724-3000	Manager: Derrick House dahouse@nlhc.nl.ca Corner Brook Office 34 Boone's Road Corner Brook, NL A2H 6H6 Tel: (709) 639-5201
Manager: Norm Feltham ndfeltham@nlhc.nl.ca Gander Office 5 Garrett Drive Gander, NL A1V 1W8 Tel: (709) 256-1303	Manager: Emile Cabot ejcabot@nlhc.nl.ca Grand Falls Office 5 Hardy Avenue Grand Falls -Windsor, NL A2A 2P8 Tel: (709) 292-1000
Manager: Stephanie Battcock sabattcock@nlhc.nl.ca Goose Bay Office 8 Royal Street Happy Valley-Goose Bay, NL AOP 1E0 Tel: (709) 896-1926	Manager: Derrick House dahouse@nlhc.nl.ca Stephenville Office 58 Oregon Drive Stephenville, NL A2N 2Y1 Tel: (709) 643-6826
Manager: Jessie Cluett jdcluett@nlhc.nl.ca Marystown Office 60 Atlantic Crescent Marystown, NL AOE 2M0 Tel: (709) 279-5375	


Newfoundland
Labrador

February 2011

Housing

REGIONAL OFFICES

Delivering NL Housing's
Low-Income Housing Programs


Newfoundland
Labrador

Housing